

# The Ranch at Etna Road

Lebanon, New Hampshire



## Client Contact

Amy Gamache  
The Ranch at Etna Road  
77 Etna Road  
Lebanon, New Hampshire  
Phone: 603-448-9888

## Construction Cost

\$1,300,000

## Project Cost

## Gross Square Feet

14,000 square feet New

## Start/Completion Date

2005

## Awards

### Banwell Architects

Ingrid Moulton, AIA

### General Contractor

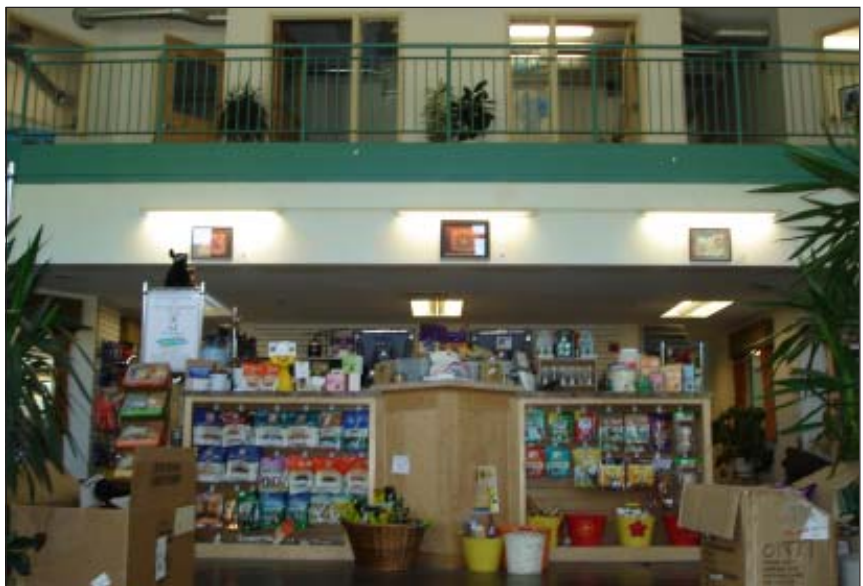
All Seasons Construction

### Major Consultants

Civil: Pathways Consulting  
Structural: DeWolfe Engineering  
HVAC (Design Build):  
ARC Mechanical  
Electrical (Design Build):  
Defiance Electric



New 14,000 sf 2-story dog daycare facility. Basement level houses mechanical room, dog kennels, interior play areas, as well as support areas. Main level houses 4 large indoor play areas, front desk area, kitchen/support area. Upper level houses a grooming room, cat room, two offices, studio, storage and mechanical space.



**BANWELL**  
ARCHITECTS